

ETH / 1 FLASH TYPICAL

Ex db IIB+H2 Gb Ex tb IIIC Db II2GD

T5
T100°C



-20°C

Ex db IIC Gb Ex tb IIIC Db II2GD



+60°C

COMBINATIONS
BEACON SOUNDER

zone 1

zone 2

DIRECTIVE 2014/34/UE

T6
T85°C



-20°C

COMBINAZIONI
OTTICO ACUSTICA

zone 21

zone 22



IP66



+40°C

Caratteristiche: Esempi tipici di combinazione OTTICO&ACUSTICA a normativa ATEX con scatola morsettiera.

Features: Typical examples LIGHT&SOUND combinations a new standard ATEX with terminals box.

ETH / 1 FLASH

TIPICO 2 / TYPICAL 2
ETH20MD 4W + EVA50
+ JBOX



TIPICO 3 / TYPICAL 3
ETH20MD 10W + EVA50 + JBOX



TIPICO 1 / TYPICAL 1
ETH20MD 4W + EVA50
+ JBOX

TIPICO 4 / TYPICAL 4
1 ETH20MD 4W + 2 EVA50 + JBOX



TIPICO 5 / TYPICAL 5
1 ETH20MD 10W + 2 EVA50 + JBOX



TIPICO 6 / TYPICAL 6
1 ETH20MD 4W + 3 EVA50 + JBOX



TIPICO 7 / TYPICAL 7
1 ETH20MD 10W + 3 EVA50 + JBOX



ETH / 2 FLASH TYPICAL

Ex db IIB+H2 Gb Ex tb IIIC Db II2GD

T5
T100°C



-20°C

Ex db IIC Gb Ex tb IIIC Db II2GD



+60°C

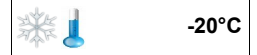
COMBINATIONS
BEACON SOUNDER

zone 1

zone 2

DIRECTIVE 2014/34/UE

T6
T85°C



-20°C

COMBINAZIONI
OTTICO ACUSTICA

zone 21

zone 22



IP66



+40°C

Caratteristiche: Esempi tipici di combinazione OTTICO-ACUSTICA a normativa ATEX con scatola morsettiera.

Features: Typical examples LIGHT&SOUND combinations a new standard ATEX with terminals box.

ETH / 2 FLASH

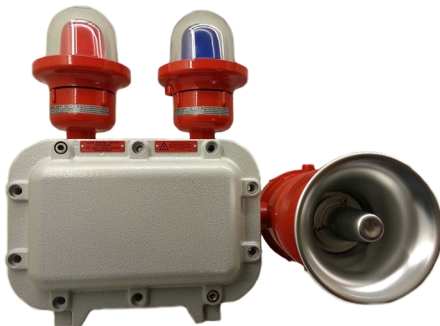
TIPICO 1 / TYPICAL 1
1 ETH20MD 4W + 3 EVA50 + JBOX



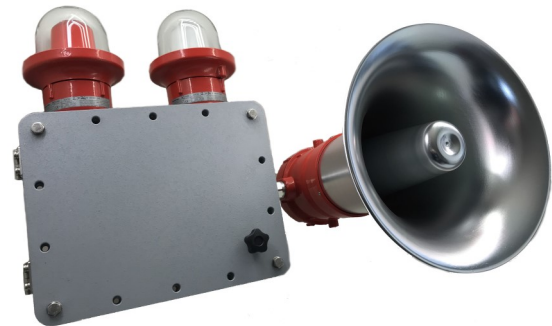
TIPICO 2 / TYPICAL 2
1 ETH20MD 10W + 3 EVA50 + JBOX



TIPICO 3 / TYPICAL 3
1 ETH20MD 4W + 2 EVA50 + JBOX



TIPICO 4 / TYPICAL 4
1 ETH20MD 10W + 2 EVA50 + JBOX



TIPICO 5 / TYPICAL 5
1 ETH20MD 10W + 2 EVA + JBOX



TIPICO 6 / TYPICAL 6
1 ETH20MD 4W + 2 EVA + JBOX



ETH / 3 FLASH TYPICAL

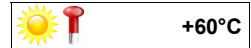
Ex db IIB+H2 Gb Ex tb IIIC Db II2GD

T5
T100°C



-20°C

Ex db IIC Gb Ex tb IIIC Db II2GD



+60°C

COMBINATIONS
BEACON SOUNDER

zone 1

zone 2

DIRECTIVE 2014/34/UE

T6
T85°C



-20°C

COMBINAZIONI
OTTICO ACUSTICA

zone 21

zone 22



IP66



+40°C

Caratteristiche: Esempi tipici di combinazione OTTICO-ACUSTICA a normativa ATEX con scatola morsettiera.

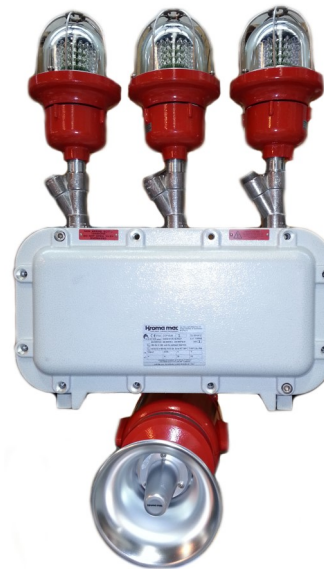
Features: Typical examples LIGHT&SOUND combinations a new standard ATEX with terminals box.

ETH / 3 FLASH

TIPICO 1 / TYPICAL 1
1 ETH20MD 10W + 3 EVA50 + JBOX



TIPICO 2 / TYPICAL 2
1 ETH20MD 4W + 3 EVA50 + JBOX



TIPICO 3 / TYPICAL 3
2 ETH20MD 10W + 2 EVA50 + JBOX



TIPICO 4 / TYPICAL 4
1 ETH20MD 4W + JBOX SS Exe



TIPICO 5 / TYPICAL 5
1 ETH20MD 10W + 3 EVA50 + JBOX + PLATE



COMBINAZIONE	TIPICO	MODELLO SIRENA	MODELLO LAMPADA	POTENZA LAMPADA	TENSIONE LAMPADA SIRENA	COLORE GEMME	NUMERO LAMPADE SIRENE	N. TERMINAL
COMBINATION	TYPICAL	MODEL SOUNDER	MODEL BEACON	EFFECTIVE INTENSITY	VOLTAGE BEACON SOUNDER	COLOR SIGNALING LAMP	NUMBER BEACON SOUNDER	JBOX
ETH1/FLASH	(1)	ETH20MD(4W)	EVA(50) EVA(100C) EVA(200C)	(6J) (16J) (21J)	12V 24VAC 24VDC 48VAC 48VDC 110VAC 110VDC 230VAC	(R) Red (Y) yellow (A) orange (G) green (BL) blue (W) white	1	4 2,5mmq
	(2)	ETH20MD(32-4W)					1	ST26 1x3/4
	(3)	ETH20MD(10W) ETH20MD(32-10W)					2	6 2,5mmq
	(4)	ETH20MD(4W) ETH20MD(32-4W)					1	ST26 1x3/4
	(5)	ETH20MD(10W) ETH20MD(32-10W)					3	8 2,5mmq
	(6)	ETH20MD(4W) ETH20MD(32-4W)					1	ST26 1x3/4
	(7)	ETH20MD(10W) ETH20MD(32-10W)						
ETH2/FLASH	(1)	ETH20MD(4W) ETH20MD(32-4W)	EVA(50) EVA(100C) EVA(200C)	(6J) (16J) (21J)	12V 24VAC 24VDC 48VAC 48VDC 110VAC 110VDC 230VAC	(R) Red (Y) yellow (A) orange (G) green (BL) blue (W) white	3	... 2,5mmq To be defined
	(2)	ETH20MD(10W) ETH20MD(32-10W)					1	GUB To be defined
	(3)	ETH20MD(4W) ETH20MD(32-4W)					2	... 2,5mmq To be defined
	(4)	ETH20MD(10W) ETH20MD(32-10W)						
	(5)	ETH20MD(10W) ETH20MD(32-10W)						
	(6)	ETH20MD(4W) ETH20MD(32-4W)						
ETH3/FLASH	(1)	ETH20MD(10W) ETH20MD(32-10W)	EVA(50) EVA(100C) EVA(200C)	(6J) (16J) (21J)	12V 24VAC 24VDC 48VAC 48VDC 110VAC 110VDC 230VAC	(R) Red (Y) yellow (A) orange (G) green (BL) blue (W) white	3	... 2,5mmq To be defined
	(2)	ETH20MD(4W) ETH20MD(32-4W) ETH20MD(10W) ETH20MD(32-10W)					1	GUB To be defined
							3	... 2,5mmq To be defined
	(3)						1	EJB To be defined
	(4)						3	... 2,5mmq To be defined
(5)		2	EJB To be defined					
		0	... 2,5mmq To be defined					
		1	GWY To be defined					
		3	... 2,5mmq To be defined					
		1	GUB To be defined					
ESEMPIO ORDINE ORDER EXAMPLE	ETH1/FLASH	(1)	(4W)	(50)	(6J)	24VDC	(R)	



COMBINAZIONE	TIPICO	MODELLO SIRENA	MODELLO LAMPADA	POTENZA LAMPADA	TENSIONE LAMPADA SIRENA	COLORE GEMME	NUMERO LAMPADE SIRENE	N. TERMINAL
COMBINATION	TYPICAL	MODEL SOUNDER	MODEL BEACON	EFFECTIVE INTENSITY	VOLTAGE BEACON SOUNDER	COLOR SIGNALING LAMP	NUMBER BEACON SOUNDER	JBOX
ETH1/LED	(1)	ETH20MD(4W)	EVA(50)	(L40) (L60) (L80) (L100)	12V 24VAC 24VDC 48VAC 48VDC 110VAC 110VDC 230VAC	(R) Red (Y) yellow (A) orange (G) green (BL) blue (W) white	1	4 2,5mmq
	(2)	ETH20MD(32-4W)					1	ST26 1x3/4
	(3)	ETH20MD(10W) ETH20MD(32-10W)					2	6 2,5mmq
	(4)	ETH20MD(4W) ETH20MD(32-4W)					1	ST26 1x3/4
	(5)	ETH20MD(10W) ETH20MD(32-10W)					3	8 2,5mmq
	(6)	ETH20MD(4W) ETH20MD(32-4W)					1	ST26 1x3/4
	(7)	ETH20MD(10W) ETH20MD(32-10W)						
ETH2/LED	(1)	ETH20MD(4W) ETH20MD(32-4W)	EVA(50)	(L40) (L60) (L80) (L100)	12V 24VAC 24VDC 48VAC 48VDC 110VAC 110VDC 230VAC	(R) Red (Y) yellow (A) orange (G) green (BL) blue (W) white	3	... 2,5mmq To be defined
	(2)	ETH20MD(10W) ETH20MD(32-10W)					1	GUB To be defined
	(3)	ETH20MD(4W) ETH20MD(32-4W)					2	... 2,5mmq To be defined
	(4)	ETH20MD(10W) ETH20MD(32-10W)						
	(5)	ETH20MD(10W) ETH20MD(32-10W)						
	(6)	ETH20MD(4W) ETH20MD(32-4W)						
ETH3/LED	(1)	ETH20MD(10W) ETH20MD(32-10W)	EVA(50)	(L40) (L60) (L80) (L100)	12V 24VAC 24VDC 48VAC 48VDC 110VAC 110VDC 230VAC	(R) Red (Y) yellow (A) orange (G) green (BL) blue (W) white	3	... 2,5mmq To be defined
	(2)	ETH20MD(4W) ETH20MD(32-4W) ETH20MD(10W) ETH20MD(32-10W)					1	GUB To be defined
							3	... 2,5mmq To be defined
	(3)						1	EJB To be defined
	(4)						3	... 2,5mmq To be defined
(5)		2	EJB To be defined					
		0	... 2,5mmq To be defined					
		1	GWY To be defined					
		3	... 2,5mmq To be defined					
		1	GUB To be defined					
ESEMPIO ORDINE ORDER EXAMPLE	ETH1/LED	(1)	(4W)	(50)	(L40)	24VDC	(R)	(F) FIXED (I) INTERMITTENT (R) ROTATING

