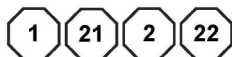
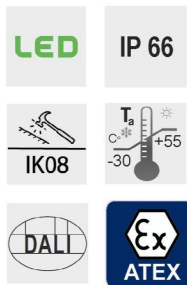


Zone



KPSF LED



- Central locking with internal switch
- Through-wiring
- LED modules with innovative encapsulation
- Estimated service life up to 70 000 hours
- High color rendering index CRI 80
- With OVP, OCP, OTP protection
- Autonomous reactivation after recovery
- Color temperature: 4300K / other CCT on request (5000K, 6300K)
- DALI for controlling and monitoring the luminaire on request

CONSTRUCTION

Enclosure: SMC polyester plastic reinforced with glass fiber, color RAL 7038
 Diffuser: PC polycarbonate plastic
 Gasket: silicone
 Central locking: can be opened/closed using a socket key SW8, hinged lamp cover
 The light fitting is normally supplied with socket key, two Ex eb cable glands M25, two Ex eb plugs M25 and with mounting set KPSF 30-110

TECHNICAL DATA

Certificate:	ATEX
Marking:	CE
Apparatus category:	II 2GD, I M2
Marking of explosion protection:	Ex db eb mb op is IIC T4 Gb Ex tb op is IIIA/IIIC T80°C Db Ex db eb mb I Mb
Ambient temperature:	-30°C ≤ T _a ≤ +55°C -30°C ≤ T _a ≤ +40°C
Degree of protection:	IP 66 category 1
Resistance to shock:	IK 08
Protection class :	I (protective earthing)
Rated voltage:	100-305 VAC / 142-431 VDC
Frequency:	50/60 Hz
Rated power:	See model code table
Estimated service life:	L70B10C10: T _{amb max} 35 000 h T _{amb max -10°C} 60 000 h T _{amb max -20°C} 70 000 h
Connecting terminals:	L1, L2, L3, N, PE - max. 2,5 mm ²
Cable entry:	Two entries Ex eb M25x1,5 for cable diameters Ø7-15 mm, and two Ex eb plugs
Packing:	The packing contains: 1 pcs KPSF 28 LED: 800 x 290x150 mm

Enclosure of light fitting KPSF...M intended for I M2 has been tested with a lower impact energy.

The light fitting shall be installed in areas that are not exposed to impact.

L'involucro dell'apparecchio di illuminazione KPSF...M destinato per MINIERA I M2 è stato testato con un basso impatto di energia.

L'apparecchio di illuminazione dovrà essere installato in aree non esposte agli urti.

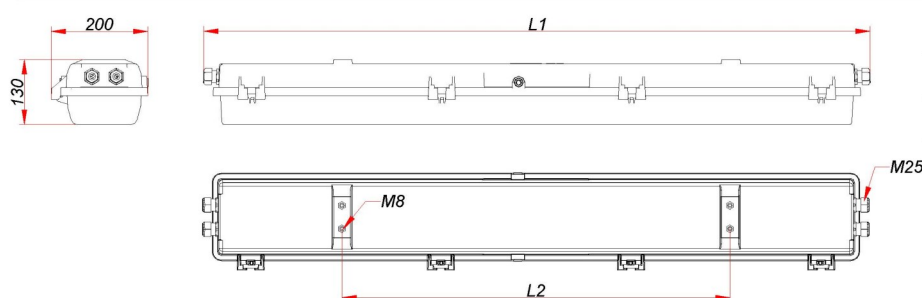


Linear LED light fitting

MODEL CODE

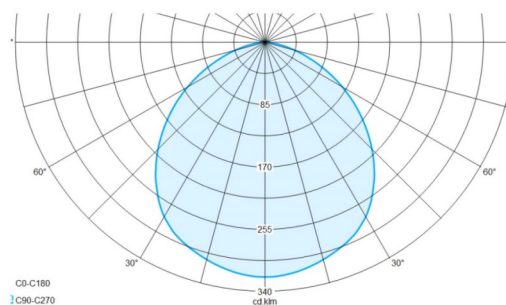
MODEL CODE	Power consumption [W]	Voltage [V]	Light fitting Luminous flux [lm]	System efficacy [lm/W]	AMBIENT TEMP.	WEIGHT [kg]
KPSF 28 LED-M-2	37 W	100-305 VAC 142-431 VDC	4880 lm	132	$-30^{\circ}\text{C} \leq T_a \leq +40^{\circ}\text{C}$	8,0
<i>Version for the ambient temperature $T_a \leq +55^{\circ}\text{C}$</i>						
KPSF 28 LED-M-1	28 W	100-305 VAC 142-431 VDC	3820 lm	136	$-30^{\circ}\text{C} \leq T_a \leq +55^{\circ}\text{C}$	8,0

DIMENSION DRAWING (mm)



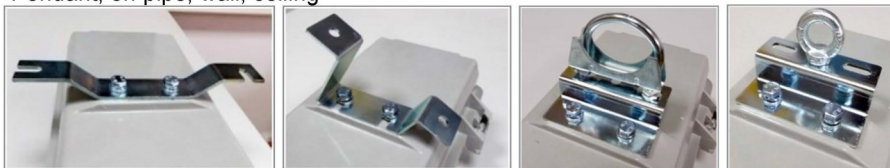
TYPE	L1 [mm]	L2 [mm]
KPSF 28 LED	750	400

POLAR CURVE



MOUNTING

Pendant, on pipe, wall, ceiling



Flexible mounting kit for KPSF LED



Linear LED without and with LED diffuser

